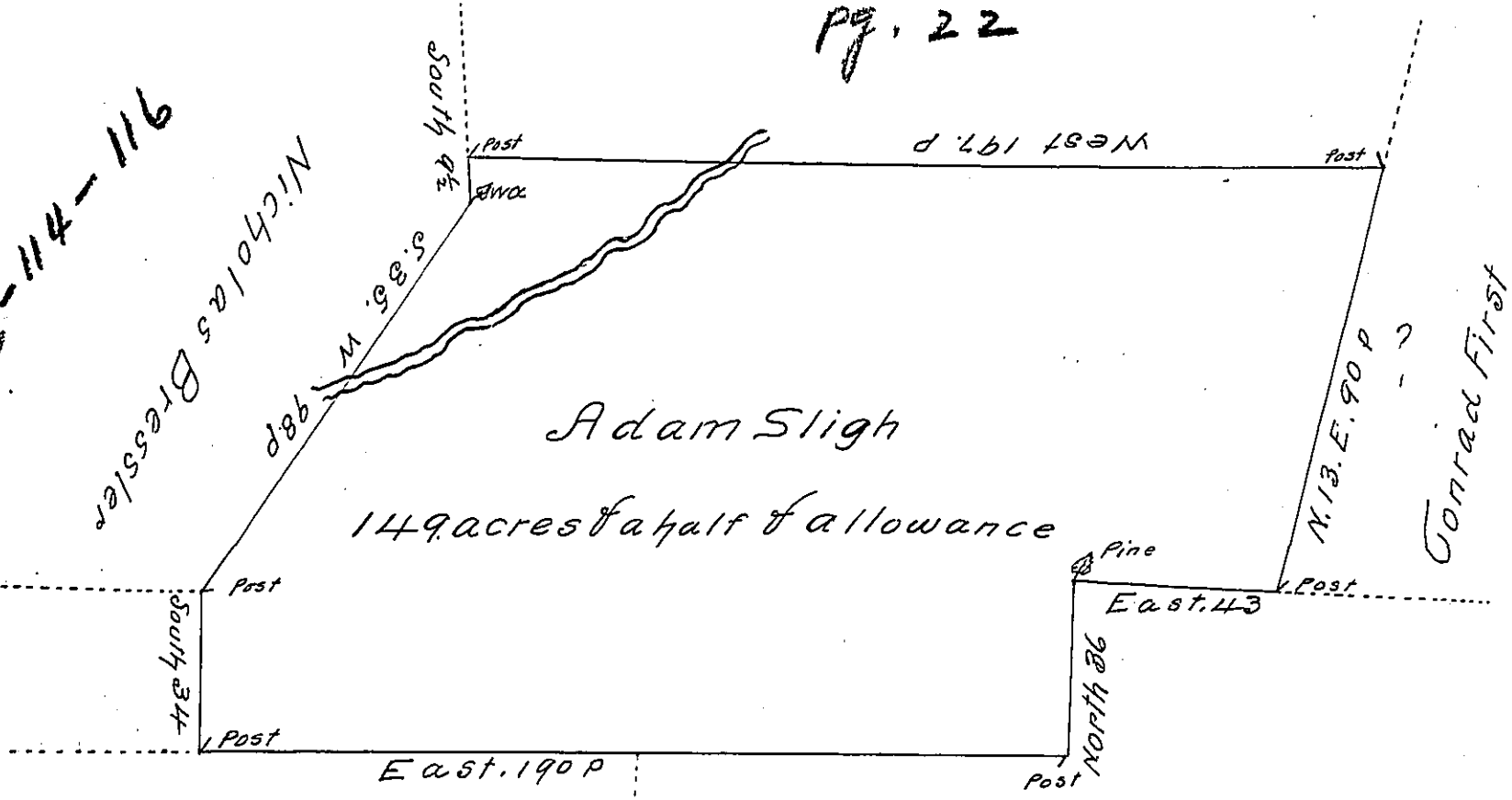


Adam Slighs other Land

pg. 22

C-114-116



C-104-88
Philip Kounselman

Barnet Tace:
A-76-13

By Virtue of a warrant dated the Twenty fifth day of March
 1786 Surveyed the first day of September 1786 To Adam Sligh
 the above described Tract of Land situate over the Broad
 Mountain in the County of Berkes Containing one Hundred
 and Forty nine acres & a half and allowance of six p
 Cent for roads &c.

Thomas Clark D.S

To John Lukens Esquire
 Surveyor General of Pennsylvania.

IN TESTIMONY that the above is a copy of the original remaining on file in
 the Department of Internal Affairs of Pennsylvania, made
 conformably to an Act of Assembly approved the 16th day of
 February, 1833, I have hereunto set my Hand and caused
 the Seal of said Department to be affixed at Harrisburg,
 this twenty seventh day of September 1904

George D. Brown
 Secretary of Internal Affairs.